

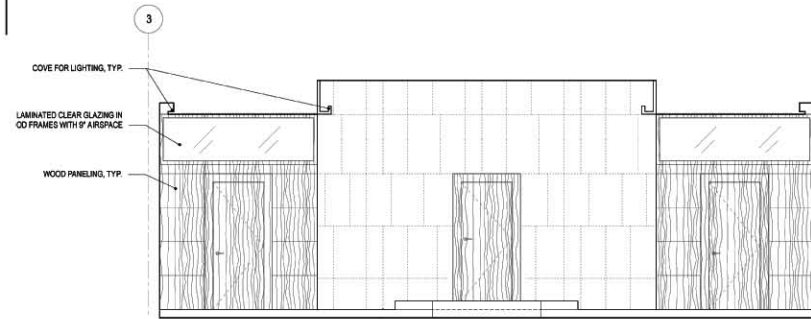
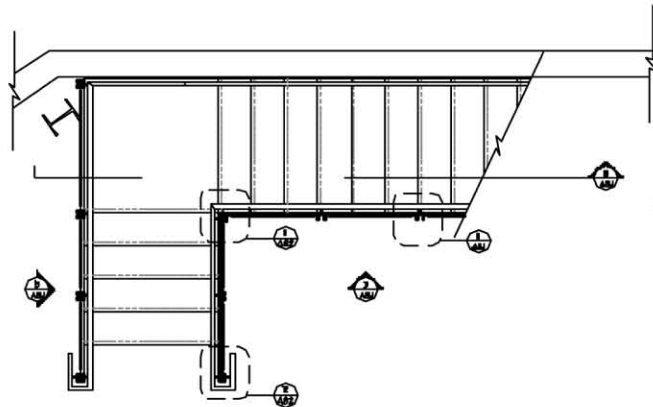
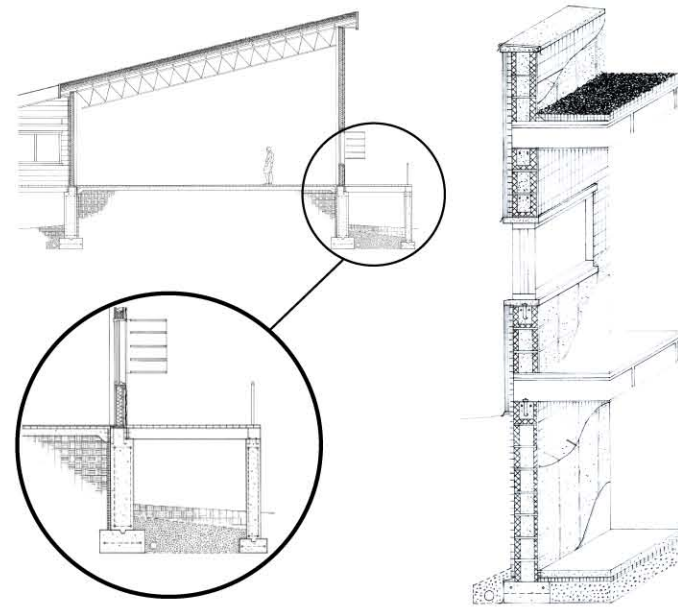
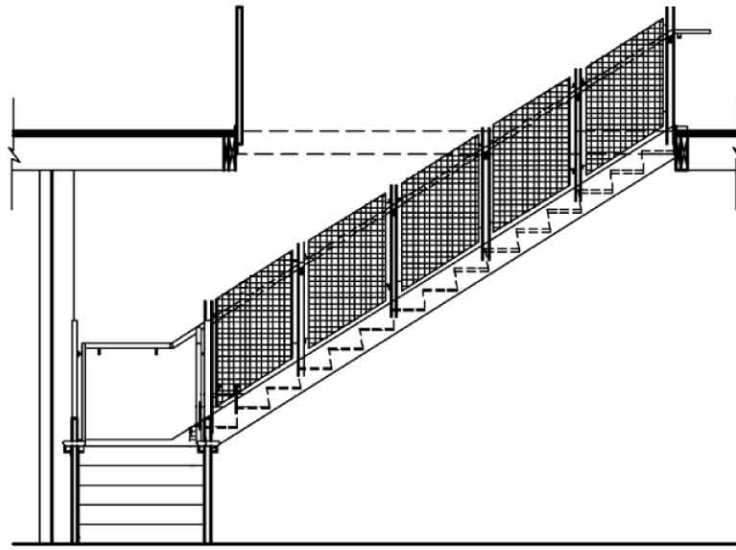
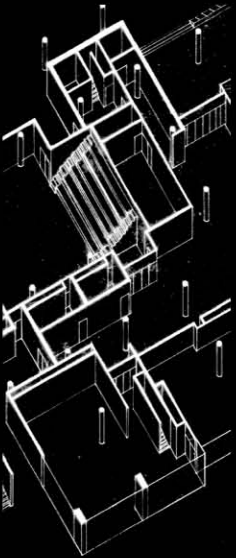


lina goldberg
portfolio of design

Drafting
2004-2005

Sections
Details
Elevations

left: AutoCad gener-
ated drawings
above right: Pen on
vellum
bottom right: Vector-
Works generated el-
evation



Jackson Square
Community Center
2007-2008

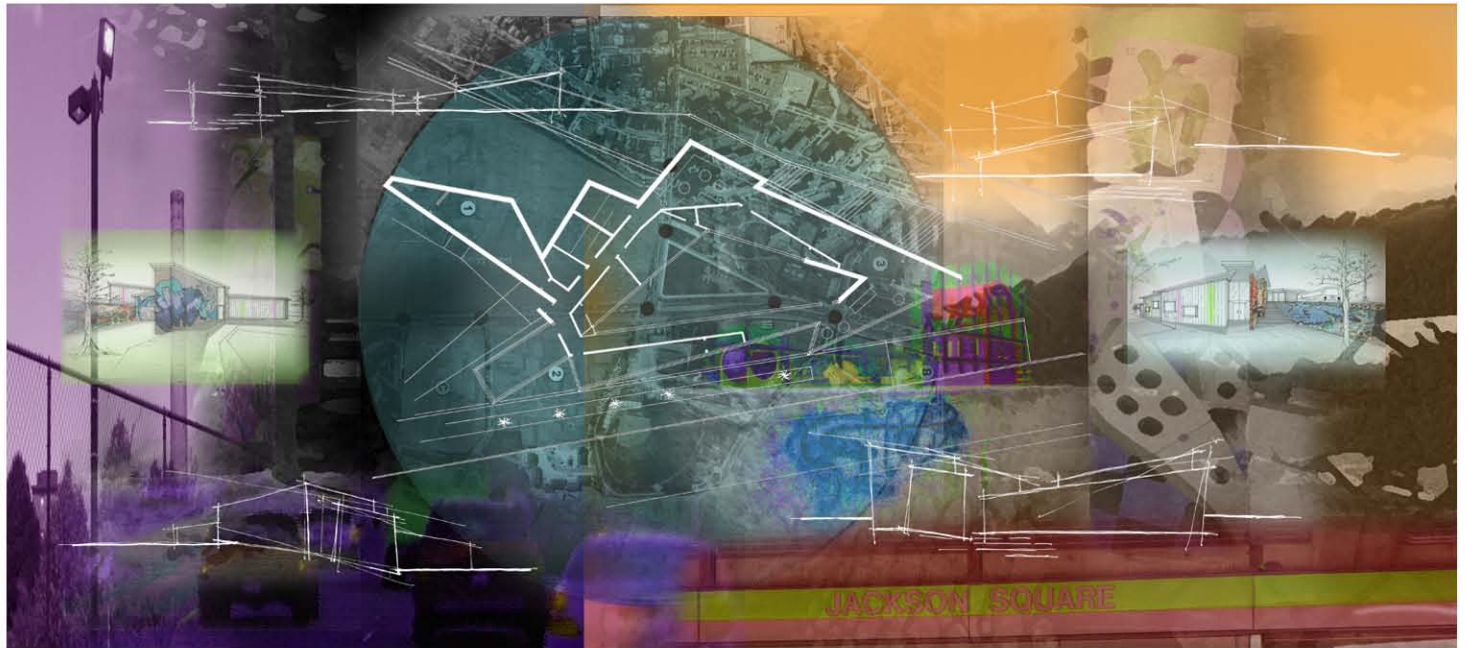
Basswood model
Perspective renderings

The thesis proposed a design of an art center with the intent to create a heightened outlook and encourage communal expression.



Jackson Square
Community Center
2007-2008

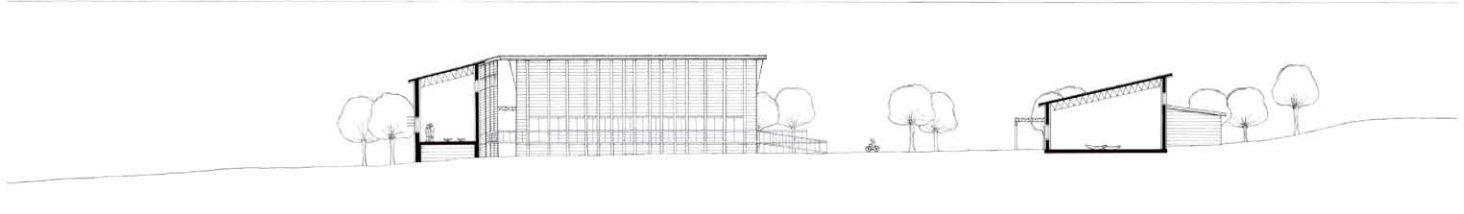
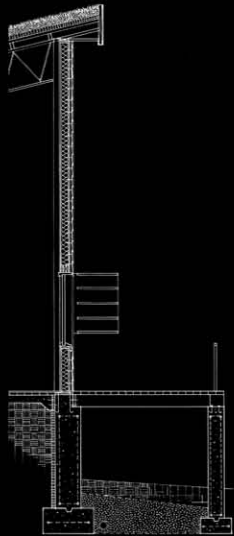
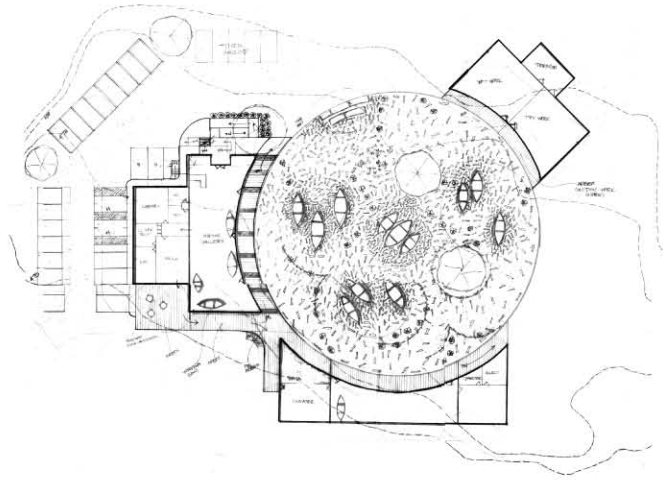
Site analysis
Image collages



Boat Museum
2004

Basswood model
Process plan
Sections

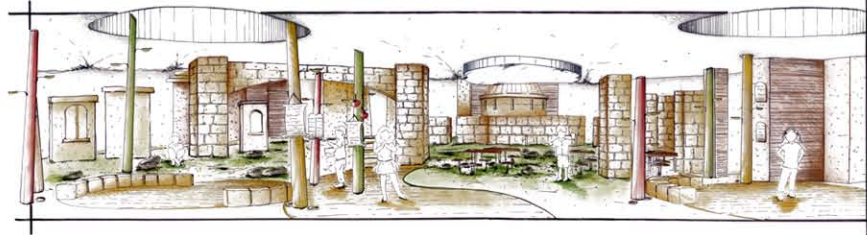
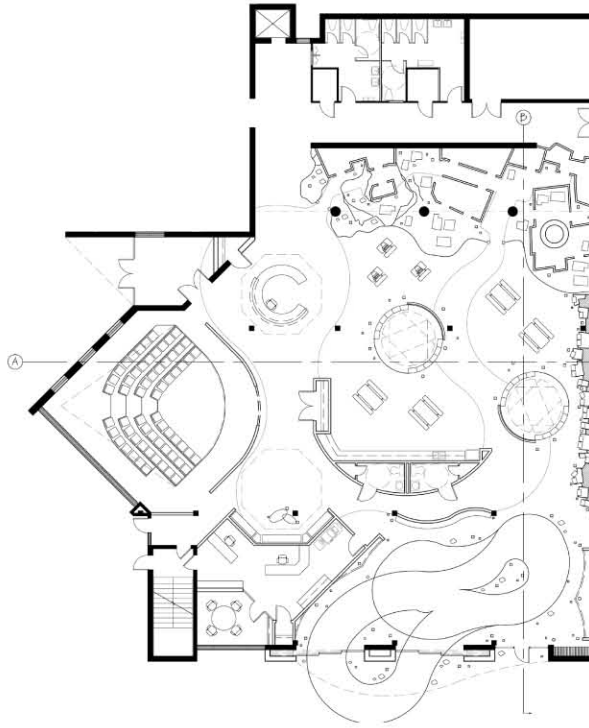
The intension was to create a boat museum by the shore of the Ohio River. The design was conceptualized to involve the landscape.



Village Preschool
2006-2007

Lighting diagrams
Process section
Axonometric drawing
Plan
Furniture mock-up

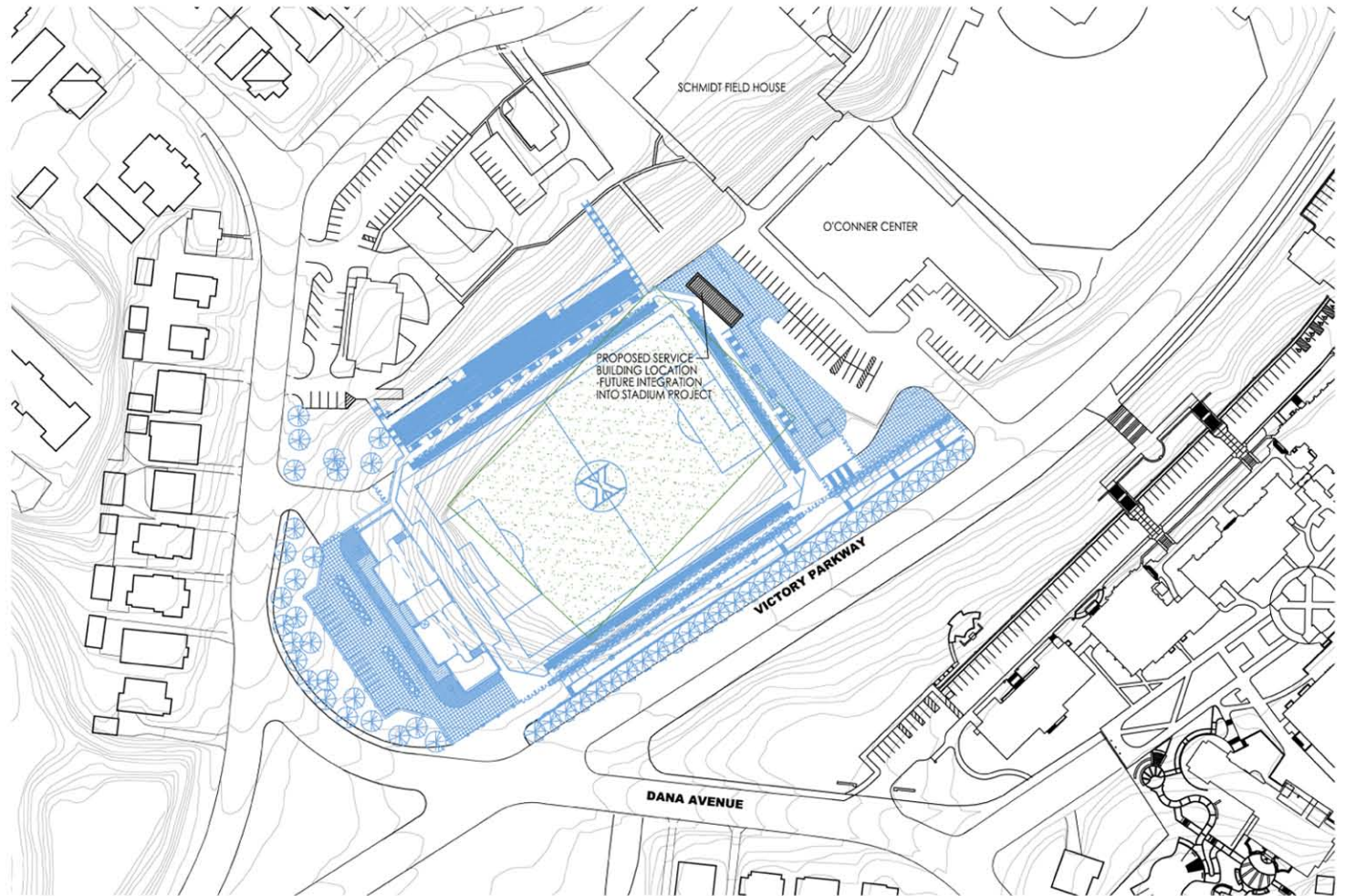
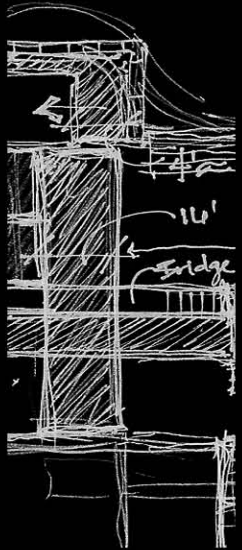
As a senior design project, I formulated a preschool program for both secular and religious studies through the concept of a children's village.



Xavier University
2006

Site plan

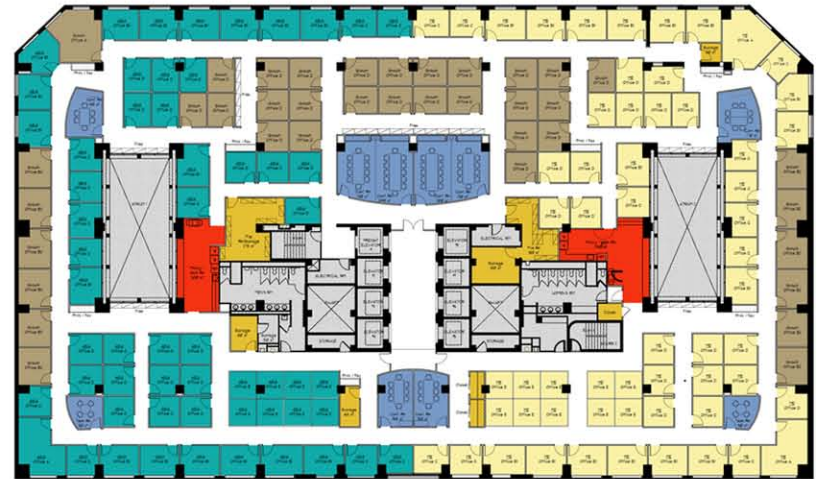
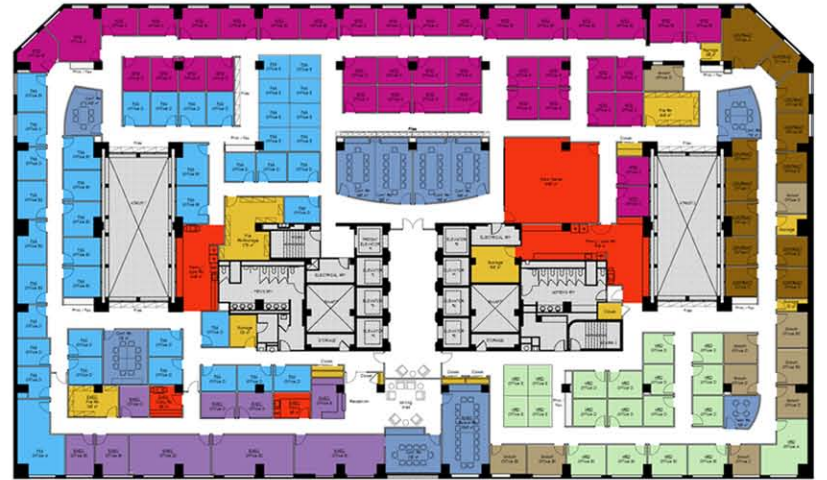
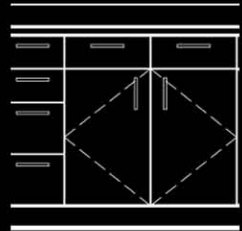
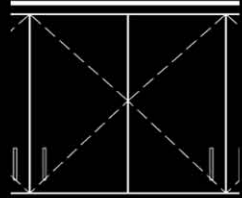
Drawn on AutoCad
to layout the new
soccer field design on
Xavier University's
campus.



Chemonics Office 2005

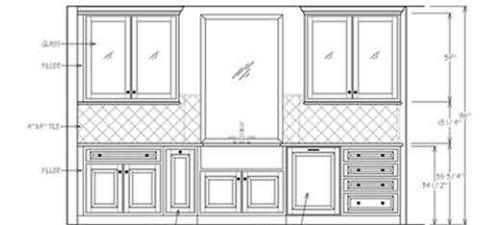
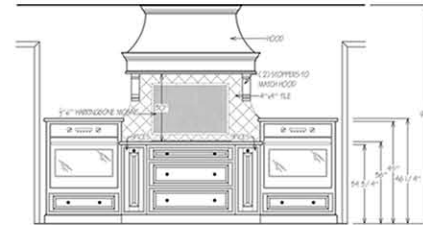
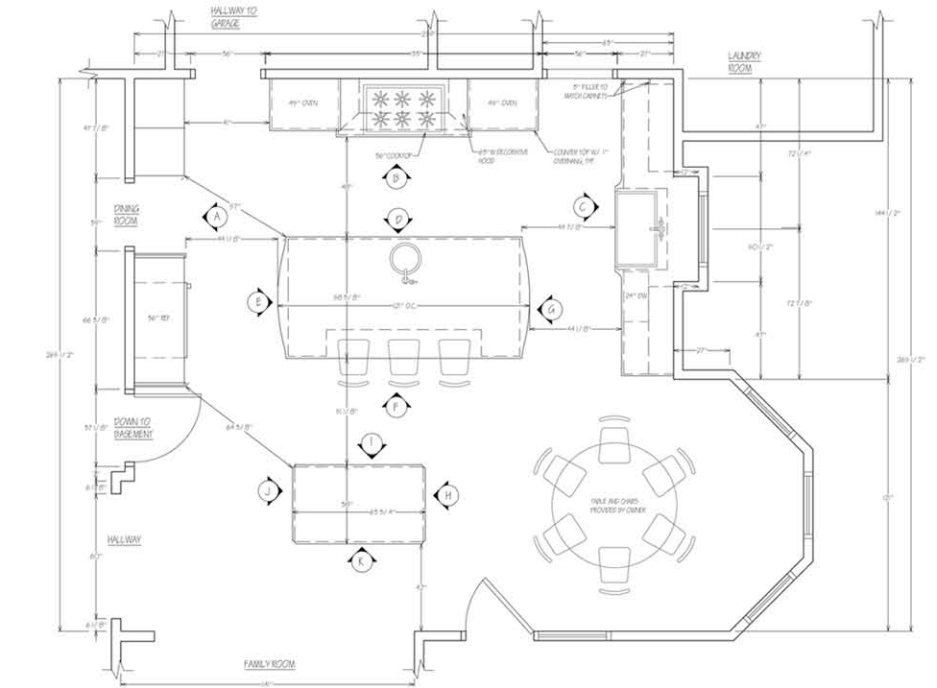
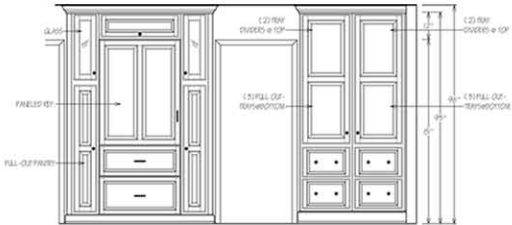
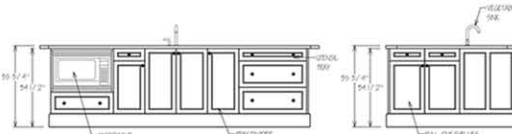
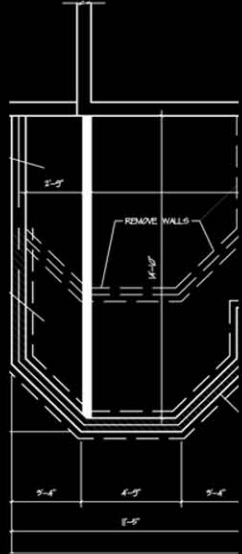
Sample plans
Photos (courtesy of
otj architects)

A multi-story relo-
cation project for a
company consisting
of over 600 staff
members.



Home Expansion
2008-2009

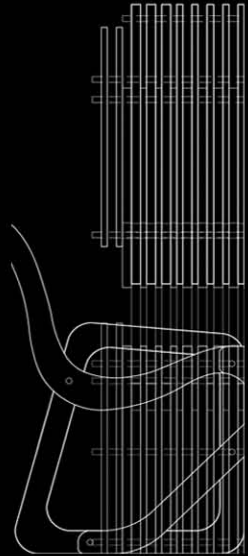
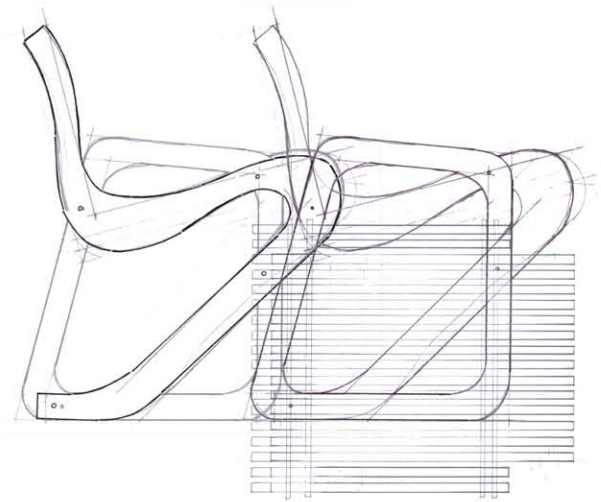
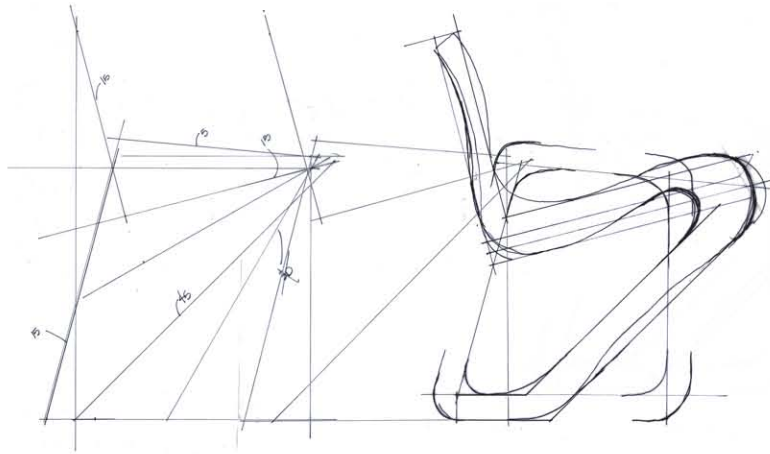
Kitchen plan
Millwork elevations



Easy Slide Chair
2008

Process drawings and
construction

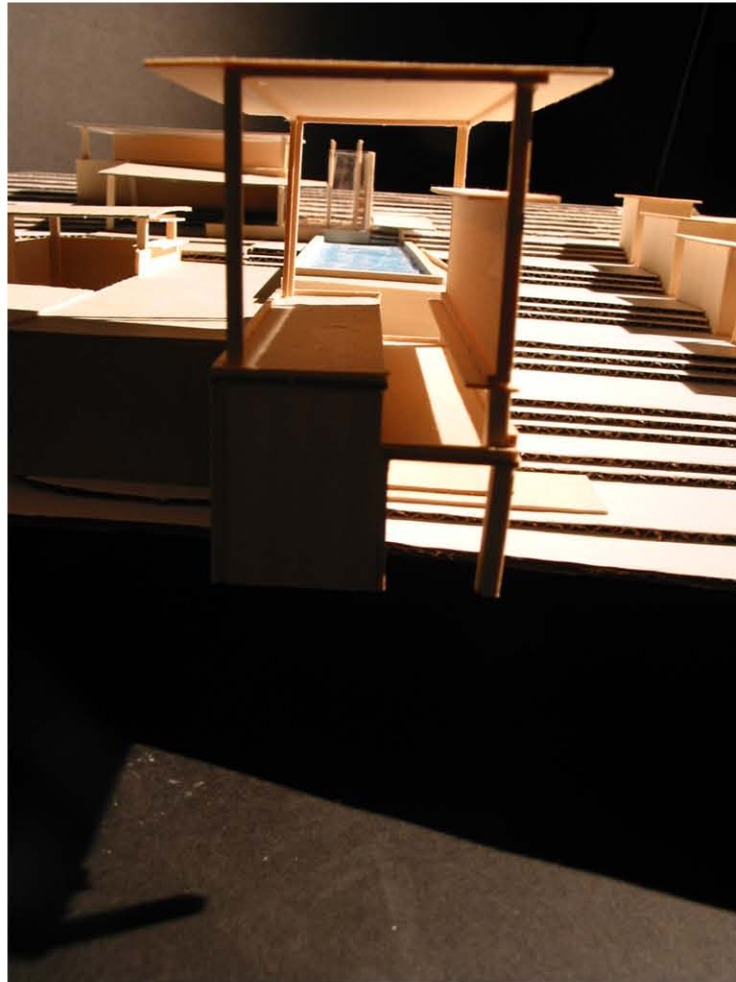
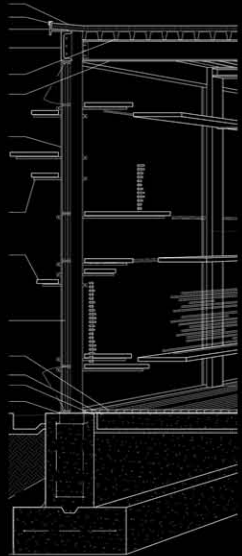
The chair was lasercut
from birch wood and
designed to fit my
proportions.



Shakertown Spa
2005-2006

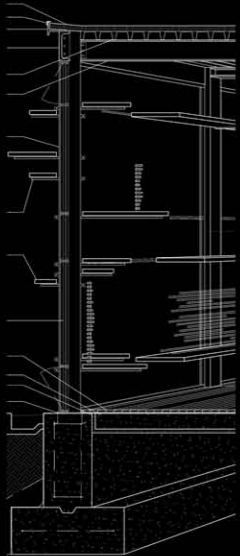
Progress model
Site photos

The design concept of the spa was to visualize the building as a system of shelves, using horizontal planes as a primary axis.



Shakertown Spa
2005-2006

Basswood model
Photo concept



Renderings
2004-2005

Prismacolor markers
and colored pencil

Perspective renderings

